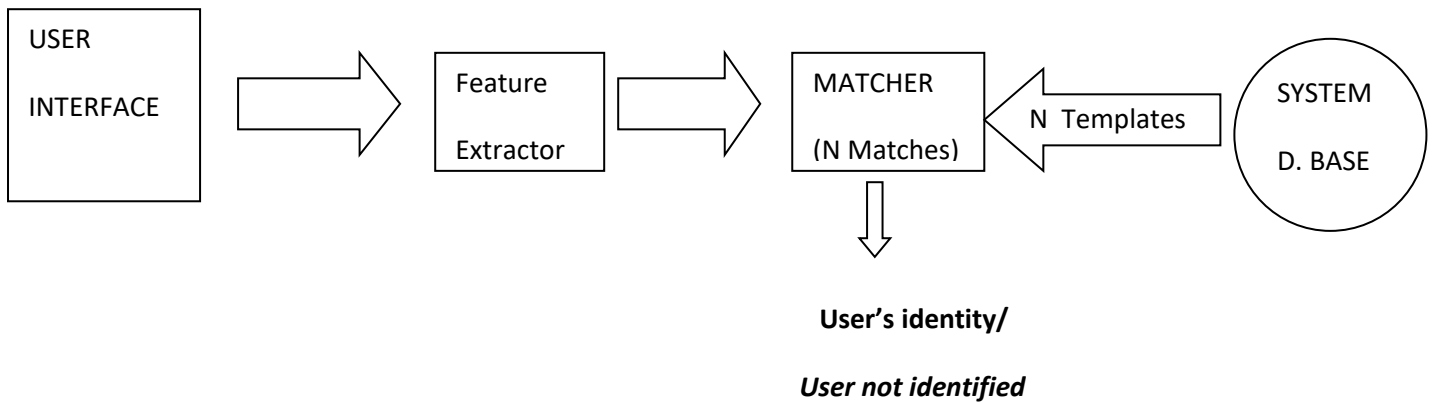


# APPENDIX 1

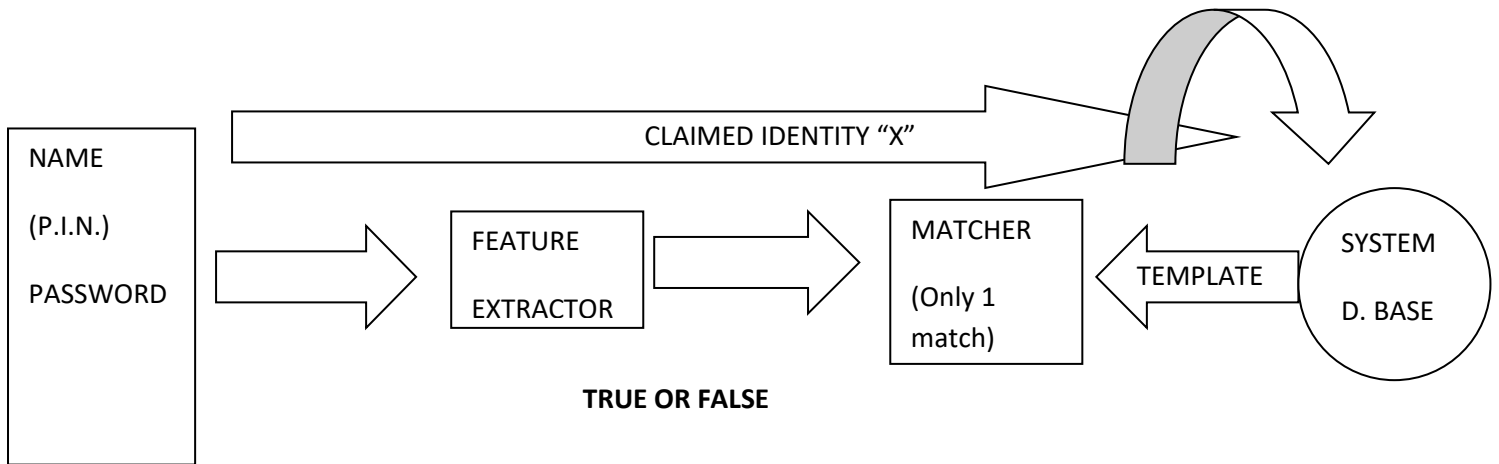
## BIOMETRIC IDENTIFICATION



Biometrics are used for human recognition. This entails two different processes. In the identification process the system database wants to know, "Who is X?" In the process, the biometric device reads the sample and compares it with (N), the entire number of records or templates in the database. This is called a, "one to many" search. Some systems are designed to get the 'best match'. Other systems score possible matches, ranking them in order of likelihood or probability.

## APPENDIX 2.

### BIOMETRIC VERIFICATION



In the verification process the system asks the question, "Is X really X? X is claiming to be X, but is this X? In this application, the user typically inputs a password, PIN or username (or combination thereof) to gain access to a building, a room or computer etc. This user input guides the system to a template in the database. A biometric sample is required from the user and this will be examined against the user defined template. There will either be a match or no match. Such a search is referred to as a "one to one" search